



Canada Energy
Regulator

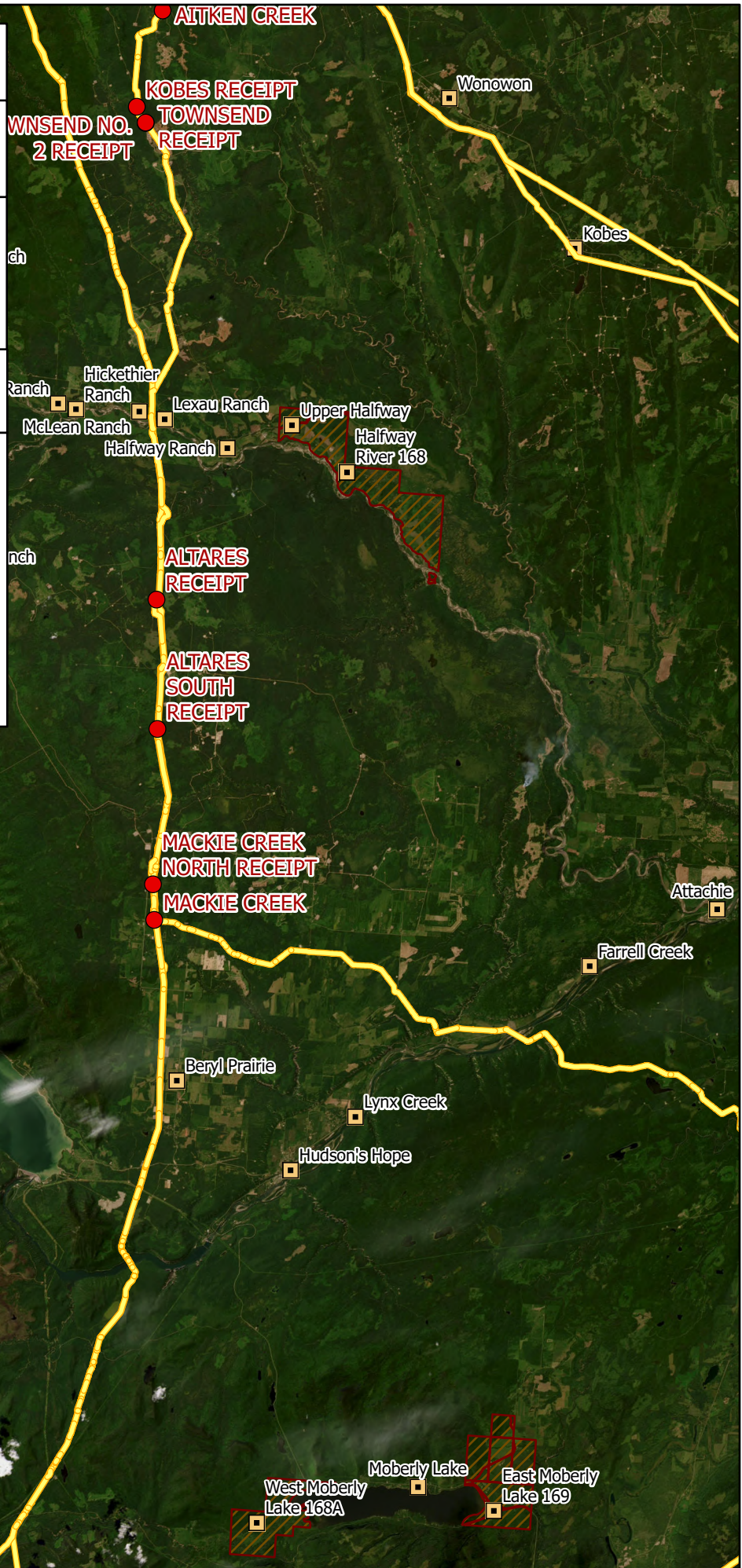
Régie de l'énergie
du Canada

NGTL GP Ltd. - Mackie Creek North Receipt Meter Station Phase II Expansion

- CER Regulated Facilities - NGTL
- CER Regulated Pipelines
- First Nations Reserves
- Provincial Boundaries
- Municipalities

Coordinate System: NAD 1983 UTM Zone 11N

0 5 10 15 20 Kilometers



This map is a graphical representation intended for general informational purposes only. The CER provides no assurances for the accuracy or completeness of datasets used in this map's creation, and accepts no liability for usage of this map. Map produced by the CER, December, 2024, Last updated on Dec 03